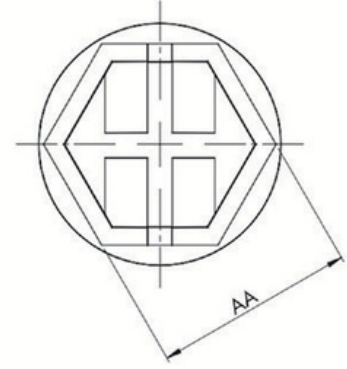
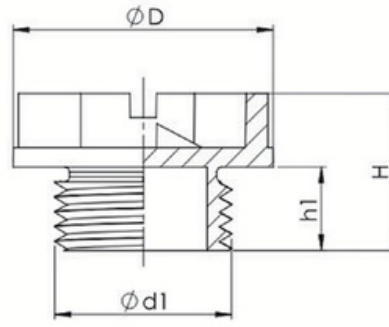


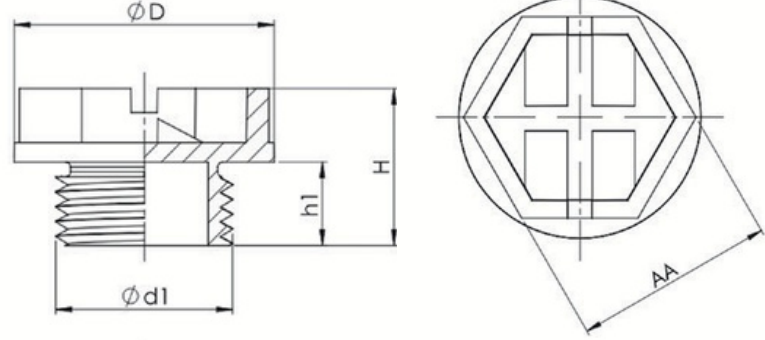
MALZEME / MATERIAL : PE (POLYETHYLENE)

ÖLÇÜ (mm) / DIMENSION (mm)						
KOD / CODE	GAZ / GAS	AA	D	d1	H	h1
110105	G1/4	16,40	20,90	12,50	16	8,5
110110	G3/8	15,80	21,30	16,15	16	8,5
110115	G1/2	21,50	28,90	20	19,20	11,20
110120	G3/4	24,40	32,30	25,80	17,70	10,50
110125	G1	29,50	39	32	21,30	11,70
110130	G1 1/4	36,50	48	40,10	22,60	13,50
110135	G1 1/2	41,40	55	46,30	22,60	13



MALZEME / MATERIAL : PE (POLYETHYLENE)

ÖLÇÜ (mm) / DIMENSION (mm)						
KOD / CODE	METRİK / METRIC	AA	D	d1	H	h1
110205	M10x1	15,80	21,30	9,6	14,50	7,20
110210	M12x1	15,80	21,30	11,70	14,50	7,20
110215	M12x1,5	15,80	21,30	11,50	15,70	8,5
110220	M14x1,5	15,80	21,30	13,,50	15,70	8,5
110225	M16x1,5	15,80	28,90	15,50	15,70	8,50
110230	M18x1,5	21,50	28,90	18,20	19,20	10,90
110235	M20x1,5	21,50	28,90	19,40	19,20	11,20
110240	M22x1,5	21,50	28,90	21,80	18	10,20
110245	M24x1,5	21,50	28,90	25,50	18	10,20
110250	M30x2	24	38	29	25	15
110255	M36x2	24	44	35	25	15
110260	M39x4	36,50	48	38	30	22
110265	M42x2	34	48	41	23	15
110270	M45x2	41,40	54,80	43,40	22,70	13
110275	M52x2	34	58	51	23	15



MALZEME / MATERIAL : PE (POLYETHYLENE)

ÖLÇÜ (mm) / DIMENSION (mm)						
KOD / CODE	UNF	AA	D	d1	H	h1
110305	7/16 - 20	15,73	21,08	10,82	14,25	7,25
110310	9/16 - 18	15,73	20,76	13,63	16,60	8,40
110315	3/4 - 16	21,50	28,90	18	19	11
110320	7/8 - 14	21,57	28,68	20,96	18,12	9,75